

Vol. 11, No. 1 January 2010

# North Dakota Simmental Scene

Official Publication of the North Dakota Simmental Association

## Scenes from the Annual Banquet & Sale



PRESORTED  
FIRST CLASS  
U.S. Postage  
PAID  
Permit No. 580  
Manhattan, KS

North Dakota Simmental Association  
6050 Old Highway 2  
Berthold, ND 58718



# TNT SIMMENTALS

25th Annual "Genetic Explosion" Sale

Friday, **FEBRUARY 12, 2010**

1:00 pm CST • At the Ranch • 5 mi. South of Almont, ND

The **MOST POWERFUL** set of bulls ever offered! Your **COMMERCIAL BULL HEADQUARTERS**, along with **BREED-LEADING HERDSIRES!** They are **THICK** and **DEEP** - All backed by the **TNT 100% GUARANTEE!**

Selling Approximately  
**160** Bulls

Purebred Black Sim  
3/4, 1/2 & 1/4 SimAngus

Purebred Red Sim  
3/4, 1/2 & 1/4 SimAngus

Purebred Red Angus



SAV Final Answer x TNT Gunner  
(Scored 10 for Igenuity tenderness)



TNT Centerfire x LRS Big Country



NLC Superior x HC Hummer  
(Maternal brother to TNT Dual Focus)



TNT Gunner x TNT Five Star



TNT Double Vision x TNT Gunner



TNT Top Gun x LCC Marias



Mytty In Focus x TNT Split Shot



TNT Accelerator x Cherokee Canyon



TNT Dual Focus x Bennett Total



Beckton Hustler x Grand Canyon (OSF)

- Volume discounts!
- Ultrasound and performance data along with current EPDs will be available!
- Majority homozygous polled!
- All reds are non-diluters!
- All blacks will be homozygous- or heterozygous-black verified!
- All are pedigree free or tested free, for genetic defects.

For catalog or DVD, contact

## TNT SIMMENTAL RANCH

Kevin & Lynette Thompson

5125 53rd St • Almont, ND 58520-9731

(701) 843-8454 • (701) 843-7043 (fax)

kevinandlynette@westriv.com • www.tntsimmmentals.com

Live internet bidding at [www.DVAuction.com](http://www.DVAuction.com).

Just 15 mi. south of I-94 Exit 123 • Visitors always welcome!



North Dakota Simmental Association  
**Board of Directors**

**Pat Thorson, President**

16644 51st Street SE  
Kindred, ND 58051  
701-371-8230

**Greg Myers**

12066 57th Street SE  
Kathryn, ND 58049  
701-924-8224

**Erika Kenner, Vice President**

5606 57th Street NE  
Leeds, ND 58346  
406-581-1188

**Robert Gannaway**

14246 A 56th Street NW  
Williston, ND 58801  
701-875-6267

**Bob Grant, Secretary/Treasurer**

6050 Old Highway 2  
Berthold, ND 58718  
701-453-3218

**Luke Keller**

1573 County Road 136  
Mandan, ND 58554  
701-445-7350

**Mike Johnson**

2262 44th Street  
McCanna, ND 58251  
701-397-5724

**Doug Bichler**

130 83rd Street SE  
Linton, ND 58552  
701-254-4306

**JR Aufforth**

6647 98th Street NW  
Bowbells, ND 58721  
701-377-2870

**Kevin Elliot**

14690 2nd Street SE  
Clifford, ND 58016  
701-488-2712

**Editor's Message...**

*Happy New Year! I hope everyone had a great holiday season. What a fitting way for 2009 to end with a major blizzard nailing the upper Midwest over Christmas!*

*Congratulations to the ND Classic Sale participants and NDSA membership on a tremendous weekend in Bismarck. A lot of time and energy goes into putting together the annual meeting, banquet and sale, and I would like to personally thank all those who put so much time in to making this event successful.*

*I encourage everyone to take a look through the pages of this issue and notice the high quality of cattle you find on every page. Some of the top Simmental and SimAngus bulls in the country that sell this spring are advertised in this issue. I would also like to thank the advertisers in this issue of the ND Scene. You have made this the highest revenue issue of the Scene since I started with the magazine.*

*Good luck to all those having production or private treaty sales this spring. Remember, the advertising deadline for the February issue of the Scene is January 20th!*

*Sincerely,  
Todd Finke*

North Dakota  
**Simmental Scene**

A publication of the North Dakota Simmental Association

Todd Finke, Sales  
35500 114th Avenue NW  
Berthold, ND 58718  
701-240-7711  
todd@edje.com

The following terms and conditions have been agreed on by the North Dakota Simmental Association Board of Directors and the North Dakota Simmental Scene Committee.

**Advertising Space Rates**

Size	BW	4C
Full Page	\$400	\$550
½ Page	\$300	\$410
¼ Page	\$200	NA
Business Card	\$150 (per year)	

**Advertising Deadlines**

Issue	Deadline
November	November 1st
January	December 20th
February	January 20th

**Terms**

All advertising accounts are due and payable as invoiced. Interest charges of 1% per month will be assessed to accounts that are 30 days past due.

**Delinquent Advertiser's Account**

Advertisers knowingly and expressly agree and consent that, whenever accounts receivable for an advertiser have not been paid as of 90 days from date involved, advertising privileges will be suspended until full payment has been received.

**Copy Changes**

Alterations in advertising copy, if requested after closing dates will be permitted only if time allows.

The North Dakota Simmental Association and the North Dakota Simmental Scene reserve the right to refuse any advertising copy at our sole discretion. The North Dakota Simmental Association and the North Dakota Simmental Scene assume no responsibility for the accuracy of the advertising content submitted. Advertisers assume all responsibility for the accuracy and truthfulness of submitted advertising containing pedigrees or statements regarding performance.

**Editorial Content**

Opinions expressed are those of the writer and not necessarily those of the North Dakota Simmental Association or the North Dakota Simmental Scene. Photographs and manuscripts are welcome, but no responsibility is assumed either while in transit or while in this office.

Produced by EDJE Technologies

Cover Photos from the Annual Banquet & Sale

# Calendar of Events

## January 2010

- 11 Edge of the West Female Sale  
*Mandan, ND*
- 18 National Western Simmental Sale The One-Vol. XIII  
*Denver, CO*
- 22 Meyer's Ranch "Think Black" Production Sale  
*Mandan, ND*
- 29 Kjelgaard Simmental Production Sale  
*McHenry, ND*

## February 2010

- 2 James Creek Simmentals Private Treaty Bull Sale  
*Heaton, ND*
- 2 Koepplin Black Simmentals Bull Sale  
*Mandan, ND*
- 3 Begger's Diamond V Ranch Production Sale  
*Wibaux, MT*
- 5 4E Simmentals' Uppin' the Ante Bull & Female Sale  
*Bismarck, ND*
- 6 Klain Simmental Ranch Annual Production Sale  
*Turtle Lake, ND*
- 9 Bata/Olafson Production Sale  
*Rugby, ND*
- 10 Breeding for the Future Production Sale  
*Napoleon, ND*
- 10 Wicks Cattle Co. & Spruce Hill Ranch Bull Sale  
*Ludlow, SD*
- 11 Lassie/Skillestad Ranches Annual Production Sale  
*Glendive, MT*
- 12 TNT Simmentals 23rd Annual Genetic Explosion Bull Sale  
*Almont, ND*
- 13 Kenner Simmental Ranch 12th Annual Production Sale  
*Bismarck, ND*
- 13 Ekstrum Simmentals Bull Sale  
*Kimball, SD*
- 14 Rydeen Farms Annual Production Sale  
*Clearwater, MN*
- 14 Nelson Livestock Company Bull Sale  
*Wibaux, MT*

## February 2010 Continued

- 15 Dakota Power Bull Sale  
*Valley City, ND*
- 15 Traxinger Simmentals Private Treaty Bull Sale  
*Claremont, SD*
- 16 Keller's Broken Heart Ranch Annual Production Sale  
*Mandan, ND*
- 17 Sys Simmentals Annual Bull Sale  
*Douglas, ND*
- 17 Hieggelke Simmentals Annual Production Sale  
*Lisbon, ND*
- 18 Hoiby Simmentals Annual Production Sale  
*Rugby, ND*
- 18 Bichler Johnson Annual Production Sale  
*Linton, ND*
- 19 Dakota Xpress Simmental Sale  
*Bismarck, ND*
- 20 Ellingson Simmentals Production Sale  
*Rugby, ND*
- 21 Northern Plains Simmental Private Treaty Sale  
*Bowbells, ND*
- 22 Bulls of the Big Sky Bull Sale  
*Billings, MT*
- 23 Larson's XL Simmental Production Sale  
*Mandan, ND*

## March 2010

- 2 Doll Ranch Annual Production Sale  
*Mandan, ND*
- 11 Spring Creek Simmentals Production Sale  
*Moosomin, SK*
- 21 Rebels of the West Bull and Female Sale  
*Hamiota, MB*
- 26 Wheatland Cattle Co 6th Annual Bull Sale  
*Alameda, SK*

## April 2010

- 2 Edge of the West Bull Sale  
*Mandan, ND*

# HAVING A BULL SALE?

Email your sale report to [todd@edje.com](mailto:todd@edje.com)

and have it posted online at

[www.northdakotasimmental.com](http://www.northdakotasimmental.com)



# Kjelgaard Simmentals "Paradise Bull Sale"

## January 29, 2010 • 1:00 pm • At the Ranch, McHenry, ND

Call for a catalog! Phone: Mike - 701-785-2266, Bruce - 701-785-2815

Offering 72 Big and Powerful Coming 2 year old bulls. Simmental and SimAngus; Red and Black

31 Purebred Red Simmentals • 16 Purebred Black Simmentals • 9 Red SimAngus • 16 Black SimAngus

Sires include: TNT Gunner; TNT Top Gun; TNT New Dog; TNT Double Dose; TNT Hemi;  
TNT Split Shot; KBSR R65; Mytty In Focus; Spickler Chisum; Lelands Vacation.

We will offer several really impressive red half blood sons of Lelands Vacation, one of the high selling bulls from Lelands Red Angus.



**TNT Gunner N208**

One of the leading Red Simmental bulls in the industry noted for performance, muscle & calving ease. Homozygous polled and a non-dilluter.



**TNT Top Gun**

A Gunner son that is a red, homozygous polled, non-dilluter sire that has proven himself for performance, maternal & calving ease.



**Spickler Chisum 6175**

The top producing Angus sire at Spickler Angus and sire of last year's high selling bulls. A great set of black-half bloods sell by him.

We are also offering for sale by private treaty 50 registered black Simmental and SimAngus bred heifers. Due March 10th. Bred to "TNT Trademark". A Benett Total son. We calved him last year. His calves came easy and look great. The heifers are sired by: TNT Hemi; Spickler Chisum; TNT Split Shot; TNT Double Dose; KBSR R65; KBSR R40; KBSR S3; and KBSR S36.

*Visitors are always welcome*

## 17th Annual Production Sale

Thursday, February 11, 2010 • Glendive, MT

Two Great Programs • One Great Sale!

Selling 150 Bulls

Polled • Solid Blacks and Solid Reds

Purebred • Simmental/Angus Hybrids • Angus



LRS 61W(ET)  
Sire: SAV Final Answer  
Dam: ES Kilowat KH19  
EPDs: -/3/41/78/-/12/32/4.9/  
.16/.3/.08/.17 API: 123 • TI: 75  
Act. BW: 86 • Adj. WW: 676  
Solid Black Polled  
1/2 Simmental 1/2 Angus

SRS 37W • Purebred  
Sire: SAS T101 Sweet Meat  
Dam: Black Shamrock E157  
EPDs: 10/3/47/71/9/8/32/8/  
.06/.32/.11 API: 126 • TI: 73  
Act. BW: 95 • Adj. WW: 887  
Solid Black Purebred



### Sillestad Ranch Simmentals

Glendive, Montana 59330  
Jim and Pat • 406-377-3809  
Mike and Jill • 406-377-5871  
Patrick & Melissa • 406-377-7531  
pmskil@midrivers.com

### Lassle Ranch Simmentals

Clay and Marianne Lassle  
Glendive, Montana 59330  
406-486-5584  
email: lrsbeef@midrivers.com  
www.lassleranchsimmentals.com

## ANNUAL BULL SALE

Sunday February 14, 2010

at the Ranch, Wibaux, MT

*Selling: 100 Bulls*

Outstanding Purebred Angus Bulls

Polled and Black Performance Selected Simmental and SimAngus Bulls  
Top Notch Red Purebred Simmental and SimAngus Bulls

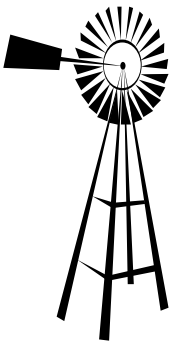


**BF M218 SNAKE EYES**



Warren • 406-588-3351  
Tom & Renee • 406-588-3371  
nlcsim@midrivers.com

Visit our website: [www.nelsonlivestockco.com](http://www.nelsonlivestockco.com)  
for updated bull pictures and information



# NORTHERN PLAINS SIMMENTALS

JR & Miranda Aufforth  
Bowbells, ND 58721  
701-377-2870



## 4th Annual Bull Sale

February 21, 2010 • At the Ranch  
Selling 20 black and 5 red polled bulls



**SYS Powerhouse T738**  
EPDs: 4 1.9 35 66 1 7 24  
His sons sell!

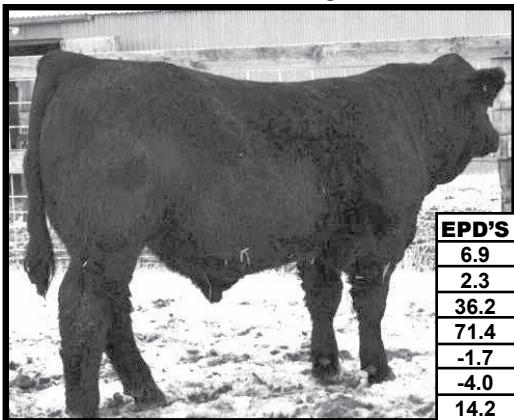


**THSF Freedom**  
EPDs: 6 0.5 44.5 91.4 12.8 6.3 28.5  
His sons sell!

# KOEPLIN'S BLACK SIMMENTALS

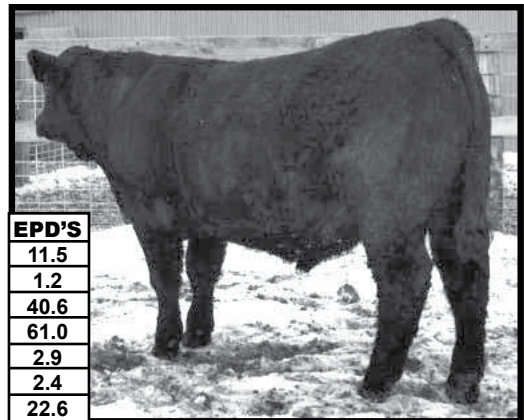
*Annual Production Sale*

**Lot 816W**  
*Brooks Above Par X Nophalt*  
BD: 2/9/2009 • BW: 92 • 205-DAY WT: 779  
5 Brooks Above Par sons selling



EPD'S
6.9
2.3
36.2
71.4
-1.7
-4.0
14.2

**Lot 363W**  
*Hustler X Black Joker*  
BD: 3/6/2009 • BW: 97 • 205-DAY WT: 818  
15 sons of Hustler selling



EPD'S
11.5
1.2
40.6
61.0
2.9
2.4
22.6

**Tuesday**  
**February 2, 2010**  
2 p.m. CST at  
Kist Livestock Auction  
Mandan, ND

**SELLING 55:**  
**Black Yearling Bulls**

ALSO SELLING: 10 ALL STAR SONS, 5 POSITIVE POWER SONS, 3 NET MERIT SONS, 1 NOPHALT SON AS WELL AS SONS OF SEVERAL OTHER SIRES.

**Terry and Marci Koeplin**  
104 4th Ave NE • Elgin, ND 58533  
701-584-3292 • Cell: 701-214-8212  
koeplinranch@westriv.com

*Where Friends Meet!*  
*Visitors always welcome*  
*at the Ranch*

**Badger and Kristine Koeplin**  
Cell: 701-367-5890  
badgerkoeplin@hotmail.com



THE SIMANGUS & ANGUS GENE POOL THAT IS UNIQUE!!

# COMBINED ADVANTAGE

DISCOVER THE DIFFERENCE!!

'09 Hybrid bulls  
averaged 5.08 IMF  
straight from the CUP Lab.

16<sup>TH</sup>  
ANNUAL  
SALE



Net Merit x Sitz Traveler 6802

Herd-Maker Deluxe! • Soft-made and classy • 1/2 Sim - 1/2 Angus

Wed. Feb. 10, 2010

At the Ranch near Ludlow, S.D. • 2:00 MDT

- 40** Yearling SimAngus Bulls
- 10** Two-Year-Old Virgin SimAngus Bulls
- 50** Two-Year-Old Virgin Angus Bulls
- 20** "Top Cut" Open SimAngus Heifers



Sire: Net Merit

Long-spined & good! • Square-rumped • 3/4 Sim - 1/4 Angus



Net Merit x VRD

Soggy & big-hipped!  
The real deal!

1/2 Sim - 1/2 Angus



Encore x 4C6 x New Trend 315

Tons of rib! • Real powerhouse • 1/4 Sim - 3/4 Angus



Net Merit x Emulation x Rito 2RT2

Show quality heifer! • 1/2 Sim - 1/2 Angus



JF Net Merit 618 S

Dream On x SAC MR MT

Our senior herdsire! • Semen available

## WICKS CATTLE COMPANY

Zane, Mary Jo & girls

4022 Hwy 8 South • Richardton, ND 58652  
H. 701-974-2332 • C. 701-290-3938

## SPRUCE HILL RANCH

Bill, Chad & Michelle Rotenberger & family

13003 Welch Fire Place • Ludlow, SD 57755

Chad. 605-576-3205 • Bill. 605-576-3208

[WWW.COMBINEDADVANTAGE.NET](http://WWW.COMBINEDADVANTAGE.NET)

High Carcass & Fertility Traits

Low birth weight • Explosive growth

Moderation & muscle • Disposition & eye appeal



# North Dakota Simmental Association Classic Sale Results

December 19, 2009 - Bismarck, ND

**Auctioneer:** Tracy Harl, Hastings, NE

**Sale Manager:** Thomas Livestock Services, Bozeman, MT

**Sale Consultant:** Jim Suver, Arlington, NE

Number	Category	Average
30	Bred Heifers	\$2648
26	Open Heifers	\$2100
4	Embryo Lots	\$1875

## High Sellers

**\$13,000**

### Bred Heifer, MJ Miss Dreamer U815

Sired by: CNS Dream ON, bred to 4E Pendleton

Consigned by: Shelby Hennessy, Berthold, ND

Purchased by: Blind Badger Ranch, Ft. Morgan, CO

**\$5,100**

### Open Heifer, BTS Chelsea 9082W

Sired by: SRS Right On 2R

Consigned by: Black Tie Simmentals

Purchased by: James Simmental Farm, Carlisle, IA

**\$4,600**

### Bred Heifer, Miss Trax U801

Sired by: Hooks Shear Force, bred to In Dew Time

Consigned by: Traxinger Simmentals, Claremont, SD

Purchased by: Labatte Simmentals, Gladmare, SK

**\$4,100**

### Bred Heifer, Double J Miss U862

Sired by: Remington Red Label HR, bred to Ellingson Legacy M229

Consigned by: Double J Farms, Garretson, SD

Purchased by: M&J Ranch, McCanna, ND

**\$4,100**

### Bred Heifer, Miss Trax U807

Sired by: Hooks Shear Force, bred to ACS Red Knight

Consigned by: Traxinger Simmentals, Claremont, SD

Purchased by: Kenner Simmentals, Leeds, ND

**\$3,800**

### Bred Heifer, SRF Miss 812U

Sired by: BF Snake Eyes, bred to Winchester HR

Consigned by: SRF Simmentals

Purchased by: Kaelberer Ranch & Thomas Bros., New Salem, ND

**\$3,750**

### Open Heifer, JSF L254W

Sired by: TNT Top Gun

Consigned by: Johnson Simmental Farm, Alberda, MN

Purchased by: Dakota Xpress Group, Center, ND

**\$3,300**

### DCR Ms Maker W291

Sired by: VS Beef Maker

Consigned by: Doll Simmentals Ranch, New Salem, ND

Purchased by: Kline Simmental Ranch, Hurdsfield, ND



Notes: A capacity crowd filled Farmers Livestock in Bismarck to view a tremendous set of bred and open females consigned by some of the best ranches in the upper Midwest.



*Thanks for attending!*





**Ellingson Nophalt W911**  
 PPSR Nophalt X Powerline  
 EPDs: 4 3 40 76 2 8 28  
 BW: 96 • Adj WW: 879 • Adj.YW: 1419



**Ellingson Olie W905**  
 Ellingson Legacy M229 "Olie" X HC Hummer  
 EPDs: 12 0 45 86 3 7 30  
 BW: 89 • Adj WW: 953 • Adj.YW: 1510



**Ellingson Red Teddy W928**  
 Wheatland Red Teddy X Lchman Bodybuilder  
 EPDs: 3 3 35 56 0 11 28  
 BW: 105 • Adj WW: 899 • Adj.YW: 1360



**Ellingson Olie W910**  
 Ellingson Legacy M229 "Olie" X Ellingson Freedom R523  
 EPDs: 8 2 46 85 5 9 32  
 BW: 93 • Adj WW: 913 • Adj.YW: 1470

# Looking for Performance?

## Ellingson Simmental Performance Bull & Female Sale

Saturday, February 20, 2009 • 1:00 pm CST

Rugby Livestock Auction, Rugby, ND

**Selling:** 55 Simmental and SimAngus Yearling Bulls  
 20 Open Heifers / Show Prospects

*Other sires include: Preferred Beef, Trademark, Top Gun, Beefmaker and Freedom.*

*Bulls will be ultrasounded and guaranteed breeders*

for catalogs and information



**Terry Ellingson & Family**

Phone: 701-384-6225

5065 125th Ave. NE

Dahlen, ND 58224

email: tellings@polarcomm.com

**Guest Consignors:**

M&J Ranch, McCanna, ND

701-397-5724

McDonald Farms, Inkster, ND

701-248-3654

**Sale Representatives:**

Todd Finke • 701-240-7711

Jeff Thomas • 406-581-8859

**View catalog online at:**

[www.simmgene.com](http://www.simmgene.com)

and

[www.breedingcattlepage.com](http://www.breedingcattlepage.com)



**Ellingson Nophalt W936**  
 PPSR Nophalt X LRS Preferred Stock  
 EPDs: 5 2 36 65 2 4 22  
 BW: 95 • Adj WW: 863 • Adj.YW: 1379



**Ellingson 680S W962**  
 Wheatland Bull 680S X Traveler 004  
 EPDs: 0 3 54 107 0 4 30  
 BW: 105 • Adj WW: 888 • Adj.YW: 1666



**Ellingson Right On W944**  
 SRS Right On X LRS Preferred Stock  
 EPDs: 7 2 48 86 3 0 23  
 BW: 85 • Adj WW: 923 • Adj.YW: 1522



**Ellingson Olie W908**  
 Ellingson Legacy M229 "Olie" X RW Bomber  
 EPDs: 11 0 50 89 5 2 27  
 BW: 85 • Adj WW: 923 • Adj.YW: 1528





"Mark of Performance"

# Traxinger Simmentals

## PRIVATE TREATY LIMITED AUCTION

February 15, 2010 • At the farm • Claremont, SD

Selling 45 Yearling Simmental & Simm-Angus Red & Black Bulls



Several bulls sired by...

◀ ACS Red Knight

Co-owned with Kenner Simmentals and Bouchard Livestock



KS Captn Jack ▶

EPDs: CE 14.5 BW -.5 WW 47 YW 81  
MCE 2.8 MM 6.9 MWW 30 API 128 TI 78

Thank You

NORTH DAKOTA BLACK CLASSIC SALE AT BISMARCK

A big thank you to Labette Simmentals of Gladstone, SK for their purchase of Miss Trax U801 and contending partnership of SRF and Kaelberer Simmental. And to Kenner Simmentals for their purchase of Miss Trax U807 with contending bidder McMillian Ranch of Carnivale Manitoba.



"Mark of Performance"

Traxinger Simmentals  
Mike & Terri Traxinger

11409 411th Avenue  
Claremont, SD 57432  
605-294-5812  
605-294-7227 cell  
mtrax@nvc.net



# Bata Brothers/Olafson Brothers

## Joint Simmental Bull and Female Sale

February 9, 2010 • 1:00 PM CST

Sale location: Rugby Livestock Auction, Hwy. 2 West, Rugby, North Dakota

- Visit our website at: [www.bataolafson.com](http://www.bataolafson.com) for updated information and videos •

**Selling:** 75 Yearling Bulls  
58 Bred Heifers

This auction will be broadcast live at [www.edjecast.com](http://www.edjecast.com).

Real time bidding will be available via the internet.



**OLF W5**

EPDs: 10 0 34 63 1 7 23  
NLC Patriarch 24P x Preferred Beef  
BW: 92 Adj. WW: 740

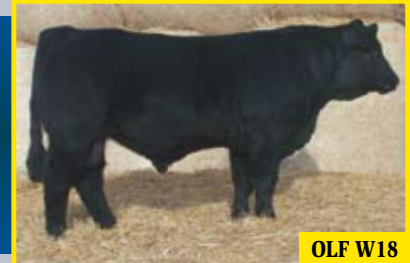
This calf is a solid package of thick muscle, depth of rib, great performance and EPDs and a solid pedigree.



**OLF W124**

EPDs: 9 1 40 73 3 6 26  
OLF Patriarch T171 x PPSR NoPhalt 20H  
BW: 97 Adj. WW: 839

A solid cherry red non-diluter going back to our great donor G4, and sired by T171, a sire that sold in our sale and is now in stud at ABS.



**OLF W18**

EPDs: 10 0 44 80 1 4 26  
NLC Patriarch 24P x BF N324 Triathlon  
BW: 90 Adj. WW: 848

This calf's pedigree combines two of our herd sires that are two of the best bulls we have ever used.



**OLF W17**

EPDs: 8 -2 37 69 4 6 24  
Nichols Legacy G151 x BF N324 Triathlon  
BW: 79 Adj. WW: 794

This calf has a rare combination of low birth weight, high weaning weight, style and eye appeal and great EPDs.



**BBS W87**

EPDs: 2 5 60 115 2 10 40  
TNT Top Cut P274 x RFS Marco M89  
BW: 85 Adj. WW: 909

Our high weaning bull, typical of the 13 TNT Top Cut sons that sell.



**BBS W4**

EPDs: 6 1 47 73 2 4 28  
Wheatland Red Teddy 457P x BBS R79  
BW: 75 Adj. WW: 807

High performance and calving ease with great EPDs.



Our sale is well-known for having a great selection of high quality bred females like this one ready to go to work in your herd.



**BBS W49A**

EPDs: 6 5 50 84 5 0 25  
Wheatland Bull 680S x BOZ Redcoat  
BW: 100 Adj. WW: 801

Super deep and thick out of a Redcoat x J109 cow. Heterozygous Black.



**BBS W34**

EPDs: 5 1 41 73 1 5 26  
MRL Black Bear 79S x SRS Fortune 500  
BW: 90 Adj. WW: 800

His maternal brothers topped our sale last year. Heterozygous Black.

Auctioneer: **Tracy Harl**

**SALE DAY PHONE:**  
**701-776-6393**

### Reference Sires:

Wheatland Red Teddy • BBS Redeye P35  
TNT Top Cut • "Olie" M229  
NLC Patriarch 24P • BF N324 Triathlon  
Wheatland 680S • Dream On  
MRL Black Bear 79S • KS Red Dove R130

Many bulls are being tested for Homozygous Polled  
View our catalog online at: [www.simmgen.com](http://www.simmgen.com).



**BATA BROS.**  
**SIMMENTAL CATTLE**  
6322 Highway 35  
Adams, North Dakota 58210  
Joe — 701-944-2732  
jpbata@polarcomm.com

**Olafson Brothers**  
**SIMMENTALS**  
**Performance**  
**Predictability**  
**Personal Service**

**Curtis Olafson**  
13043 84th St. NE  
Edinburg, ND 58227  
701-993-8240 or 8450  
colafson@polarcomm.com  
www.bataolafson.com



# Bichler/Johnson 5TH ANNUAL "QUALITY, NOT QUANTITY" SALE

FEB. 18 • 1 PM CT • LINTON LIVESTOCK • LINTON, ND  
*40 Yearling Bulls & 5 Open Heifers Sell!*



PUREBRED

**W5131** TNT Top Gun x Hart Extra Effort • BD: 2/25 • Adj. WW: 852  
 EPDs: CE 9 • BW 1 • WW 34 • YW 67 • MCE 3 • MM 5 • MWW 22



PUREBRED

**W401** TNT Knock Out x Preferred Beef • BD: 3/1 • Adj. WW: 807  
 EPDs: CE 3 • BW -6 • WW 31 • YW 55 • MCE 3 • MM 4 • MWW 20



PUREBRED

**W513** TNT Knock Out x Hart Extra Effort • BD: 2/23 • Adj. WW: 827  
 EPDs: CE 3 • BW 4 • WW 41 • YW 70 • MCE 4 • MM 4 • MWW 24

Doug Bichler • Linton, ND: 701-254-4306 or 226-4068 (cell)  
 Jeff Johnson • Alberta, MN: 701-371-4141 (cell)  
[www.johnson-bichlersimmentals.com](http://www.johnson-bichlersimmentals.com)



PUREBRED

**W1** Wheatland Red Teddy x Red Quorum • BD: 3/8 • Adj. WW: 828  
 EPDs: CE 6 • BW 0 • WW 39 • YW 66 • MCE .3 • MM 2 • MWW 22



3/4 SIMMENTAL 1/4 RED ANGUS

**W611** WS Beef Maker x Cherokee Canyon • BD: 3/1 • Adj. WW: 943  
 EPDs: CE 0 • BW .1 • WW 52 • YW 83 • MCE 0 • MM 3 • MWW 29



PUREBRED

**264W** TNT Top Gun x Fortune 500 • BD: 1/19 • Adj. WW: 709  
 EPDs: CE 10 • BW .8 • WW 33 • YW 67 • MCE 3 • MM 9 • MWW 26

THANK YOU to all bidders and buyers at the ND State Simmental Showcase Classic Sale. We'd especially like to thank Don and Elizabeth Neshem and the Dakota XPress Simmental Group for their purchases. Watch for these females in their programs in the future!



# 2010 Genetics to Make a Difference

## Semen & Embryo Manual

Contact Bouchard Livestock International to receive your 2010 Genetics to Make a Difference Semen & Embryo Manual



*Remington General Lee*



*Wheatland Red Hummer*



*LFE/BISS Black Advance*



*Destiny Buckeye*



*DFM Marcus*



*Wheatland Bull 680S*

### Bouchard Livestock International 2010 Spring Sale Calendar

**February 8**  
Bata Bros/Olafson Bros Bull & Female Sale  
*Rugby, ND*

**February 12**  
Genetic Edge Bull Sale  
*Rimbey, AB*

**February 13**  
Kenner Simmental Ranch 14th Annual Sale  
*Bismark, ND*

**February 16**  
Rainalta/Ulura Bull Sale  
*Brooks, AB*

**February 19**  
21st Annual Mader Ranch Bull & Female Sale  
*Olds, AB*

**February 24**  
Crossroad Farms Bull Sale  
*Shell Lake, SK*

**February 25**  
Robb & Hoegl Bull Sale  
*Lloydminster, SK*

**February 26**  
Lewis Farms Customer Commercial Heifer Show  
*Spruce Grove, AB*

**February 27**  
Lewis Farms 24th Annual Bull Sale  
*Spruce Grove, AB*

**March 1**  
Muirhead Cattle Co. Simmental Bull Sale  
*Shellbrook, SK*

**March 2**  
Remington "Value in Volume" Bull Sale  
*Del Bonita, AB*

**March 3**  
15th Annual Herd Master Bull Sale  
*Camrose, AB*

**March 5**  
Labatie Simmentals 30th Annual Bull & Female Sale  
*Moose Jaw, SK*

**March 6**  
16th McMillen Ranching Production Sale  
*Carrievale, SK*

**March 8**  
Ashworth Farm & Ranch and Guests Bull Sale  
*Regina, SK*

**March 10**  
Sunny Valley Simmentals/Ringstead Bull Sale  
*Saskatoon, SK*

**March 12**  
7th Annual Northern Classic Bull Sale  
*Grande Prairie, AB*

**March 14**  
Rebels Of The West Bull & Female Sale  
*Hamiota, MB*

**March 16**  
Prairie Partners Meat & Muscle Bull Sale  
*Killarney, MB*

**March 19**  
Porter Ranches Bull Sale  
*Duffield, AB*

**March 19**  
Anchor B Limousin Bull Sale  
*Saskatoon, SK*

**March 20**  
Highland Farms Limousin & Angus Bull Sale  
*High River, AB*

**March 22**  
6th Annual Butts, Curtis, Nuts Simmental Bull Sale  
*Lloydminster, SK*

**March 25**  
Wheatland/ANL 6th Annual Bull Sale  
*Alameda, SK*

**March 27**  
Southland Angus Bull Sale  
*Swift Current, SK*

**March 29**  
Double Bar D "Best of Both Worlds" Sale  
*Grainfold, SK*

**April 3**  
Bar 5's 36th Spring Spectacular Bull Sale  
*Markdale, ON*

**April 5**  
Southwest Showcase Bull Sale  
*Swift Current, SK*

**April 7**  
Pursuit of Excellence Red & Black Angus Bull Sale  
*Sedley, SK*

**April 10**  
Prairie Gold Limousin Bull Sale  
*Saskatoon, SK*

**Bouchard Livestock International will be in attendance in various capacities at these sales & events representing over 1,500 purebred & commercial herdsires. We invite your inquiries for assistance or sale catalogues. Please Note: We offer free order buying services to all potential buyers.**



**"Beef is our Business"**  
Box 1409 - Crossfield, AB - T0M 0S0  
Office: 403.946.4999 fax: 403.946.4919  
Brian Bouchard 403.813.7999  
Scott Bohrsen 403.370.3010  
Tyler Libke 306.544.7633  
info@bouchardlivestock.com  
www.bouchardlivestock.com



# Your Success Is Our Success



Cooper Brokenshire  
Sire: Wheatland Bull 540R "PTO"



Colten Brokenshire  
Champion Commercial Heifer CWA'09  
Sire: Wheatland Bull 540R "PTO"



New Trend Cattle Co.  
Senior Heifer Calf Champion  
Sire: Wheatland Bull 680S



Trendsetter Livestock  
Sire: Wheatland Bull 680S



Robb Farms  
Junior Bull Calf Champion  
Sire: Wheatland Red Ace 747T



Hawreliuk Farms  
Champion Pen of 5 Steers  
Sire: Wheatland Bull 780T



Hawreliuk Farms  
Champion Pen of 3 Steers  
Sire: Wheatland Bull 780T

Congratulations to  
all who have  
exhibited &  
excelled with  
Wheatland  
Genetics!



Maple Lake Stock Farms  
Champion Pen of Bulls  
Sire: Wheatland Bull 786T



Hawreliuk Farms  
Champion Prospect Steer  
Sire: Wheatland Bull 780T



Maple Lake Stock Farms  
Champion Pen of Open Replacement Heifers  
Sire: Wheatland Bull 786T

## It's All About Working Together!



### FOCUS ON THE FUTURE BULL SALE

Selling 30 Red & Black Simmental Herd Builders - Purebred & Simm Angus  
View the Catalogue online at [www.wheatlandcattle.com](http://www.wheatlandcattle.com)

March 25<sup>th</sup> '10  
Alameda, SK



# WHEATLAND CATTLE CO. WC

FOCUS ON THE FUTURE **FF** March 25<sup>th</sup> '10  
BULL SALE Alameda, SK

Selling 30 Red & Black Simmental Herd Builders - Purebred & Simm Angus  
View the Catalogue online at [www.wheatlandcattle.com](http://www.wheatlandcattle.com)

## A True Legend Breeding On



'Teddy'

Wheatland Bull 131L  
February 2, 2001 - October 11, 2009



Wheatland Bull 930W  
Reserve Junior Calf Champion CWA '09  
S: Wheatland Bull 680S  
GS: Wheatland Bull 131L

### Power in the Blood



Champion Get Of Sire CWA '09 - 680S  
Grandsons and Granddaughters of 131L

# WHEATLAND CATTLE CO. WC

Vernon, Denise  
Riley & Cody-Ray Lafrentz  
Ph. 306.634.7765  
Cell. 306.421.2297  
Email. [wheatlandcattle@sasktel.net](mailto:wheatlandcattle@sasktel.net)

Premier Breeder & Premier Exhibitor Award  
Winners '06, '07, '08, '09

Agribition 2009 was a huge success,  
check it out at

[www.wheatlandcattle.com](http://www.wheatlandcattle.com)





# KELLER'S BROKEN HEART RANCH

**"Simmental Beef  
on the Cutting Edge!"**

**TUES., FEB. 16, 2010**

1 PM • KIST LIVESTOCK AUCTION • MANDAN, ND

*Selling:*

**85 High-Performance  
Red & Black Simmental Bulls**

**80 Red & Black Simmental Heifers**



**KBHR W019**

Sire: TNT Knock Out Dam: KBHR P004  
ADJ WW: 770 • EPDs: 5 3 48 76 6 10 34



**KBHR W230**

Sire: KBHR Red Titan Dam: KBHR R199  
ADJ WW: 787 • EPDs: 3 1 47 83 3 6 29



**KBHR W181**

Sire: KBHR P075 Dam: KBHR M114  
ADJ WW: 744 • EPDs: 5 4 40 67 3 1 21



**KBHR W073**

Sire: TNT Knock Out Dam: KBHR L045  
ADJ WW: 803 • EPDs: 5 2 37 64 3 4 23



**KBHR W046**

Sire: TNT Top Gun Dam: KBHR K061 Faline  
ADJ WW: 762 • EPDs: 6 0 39 72 2 10 29



**KBHR W130**

Sire: TNT Top Gun Dam: KBHR L310  
ADJ WW: 773 • EPDs: 6 3 38 72 5 7 26



**KBHR W044**

Sire: TNT Knock Out Dam: KBHR R113  
ADJ WW: 750 • EPDs: 5 3 45 73 5 8 30



**KBHR W287**

Sire: TFS Red Dream Dam: KBHR K035  
ADJ WW: 841 • EPDs: 10 0 37 60 6 1 20



*He Sells!*

**Dwight & Susan Keller Family • Luke, Jake & Tess • Eugene and Helen Keller**

kbhr@westriv.com • 1573 Co. Road 136 • Mandan, ND 58554

(701) 445-7350 • Cell: (701) 471-5215 • (701) 471-1142

[www.kbhrrsimmental.com](http://www.kbhrrsimmental.com)





**Mytty In Focus x Daytona**  
*SimAngus • Black • Double polled*

AG	WW	CE	BW	YW	YW	MCE	MR	MWW	Marb	API	TI
711	--	-1	36	74	--	7	25	0.52	117	73	



**Red Teddy x Redcat**

*Purebred Simm • Red • Double polled*

AG	WW	CE	BW	YW	YW	MCE	MR	MWW	Marb	API	TI
850	6	1	31	48	0	4	19	-0.01	93	56	



**BeefMaker x Joker**

*Purebred Simm • Hetero black • Double polled*

AG	WW	CE	BW	YW	YW	MCE	MR	MWW	Marb	API	TI
794	8	1	46	74	-2	7	30	0.17	126	70	



**TNT Gunner x Red Reality**

*Purebred Simm • Red • Double polled*

AG	WW	CE	BW	YW	YW	MCE	MR	MWW	Marb	API	TI
724	7	3	44	70	3	1	23	0.09	97	65	



**ES Dakota x Full Figures**

*Purebred Simm • Black • Double Black and Polled  
 Bred to Mytty In Focus 5/18/2009*

AG	WW	CE	BW	YW	YW	MCE	MR	MWW	Marb	API	TI
650	4	1	34	55	1	5	21	0.09	104	62	

Annual Production Sale

**Feb. 19, 2010**

Kist Livestock Auction - Mandan ND

Selling

**145 Bulls**

**80 Bred Heifers**

**20 Open Heifers**

For more info, contact:

**Wade & Merri Staigle**

Center, ND (701) 794-3351  
 mandanlakeranch@westriv.com

**Kevin & Cody Hansen**

Ryder, ND (701) 758-2571

**Ron & Susie Pelton**

Halliday, ND (701) 548-8227



*Cattlemen-Approved &  
 Time-Tested Genetics*

[www.dakotaxpress.com](http://www.dakotaxpress.com)

Thank you to all of our 2009 bull and female customers!  
 We look forward to working with you again this season!



# Begger's Diamond V Ranch

## Big Sky Genetic Source Bull Sale Wednesday, February 3, 2010



**FALL BULLS** — We are offering the most powerful set of fall calved 18 month old bulls ever produced on the ranch. These bulls were born on the range developed on the range and then weaned in March. They were turned back out on grass the 1st of May and developed strictly on grass until the 1st of November, at that time we started feeding them a high roughage ration. They are big stout and athletic. They will be ready for heavy service. They are the cowman's kind.

As always they were range calved and checked once a day to be tagged and weighed. They were all born unassisted and should be the calving ease kind with fleshing ability and performance bred in.

We range calve the fall cows and heifers and rarely see a calf born. We can do this because we are confident that our cattle are the kind that reduce calving difficulties, but still maintain the genetics that grow fast and wean heavy. You will drive a lot of miles to find a better set of cattle that will offer as much potential to improve your bottom line. They are a powerful group.



**ANGUS BULLS** — This set of Angus bulls are very easy to like. They carry some of America's finest, highly proven genetics. They are thick, deep bodied bulls with outstanding do ability. If you are looking for bulls that keep their flesh and produce daughters that are big ribbed easy keeping cows with excellent udders and maternal traits, come take a look. Our customers tell us that the bulls don't fall apart and melt down like so many Angus cattle seem to do. These bulls will be big wide butted cattle that pass it on to their calves. It seems that so many Angus programs concentrated so hard on carcass and calving ease that the breed lost a lot of their easy keeping qualities. We believe we need to produce cattle that work for the cow calf man and still possess feed efficiency and carcass traits. It doesn't matter how good they cut if they aren't the kind that keep you the producer profitable.



**RED PROGRAM** — Our red program is small but powerful. We offer around 10 solid red polled nondiluter bulls every year. The bulls we are offering this year are the best we have ever produced, they are high performance beef machines. Come take a look, these bulls will offer top performance and sire calves that weigh like lead.

**At the Ranch, Wibaux, MT • 12:30 p.m.**

**Directions: 4.5 miles south, 1.5 miles east, 2.75 miles south of Wibaux.**



**SIMMENTAL BULLS** — We have been producing Simmental seedstock for 35 years and never in our life time have we ever weaned and produced a more powerful set of calves. Without a doubt this group of bulls are the stoutest ever.

These bulls are performance bulls, they were born easily and performed very well. They are very easy to handle and be around.

If you are looking for genetics that offer excellent calving ease, superb performance, excellent mothering ability with top gainability and carcass merit, we offer this and more. All of these bulls are polled and many generations black. Most are homozygous black and polled.

This year cattlemen took a hit and it really paid to have extra pounds to sell. These cattle will sire calves that produce extra pay weight and value. They will work very well on Angus, Baldy and British cows. In today's economy cattlemen will need all the extra profitability that they can produce.



**1/2 BLOOD SIMANGUS OPTIMIZERS** — This 1/2 blood SimAngus Optimizer Bull is an example of the kind we are producing in volume. We demand fleshing ability along with efficiency. We know that most cattlemen run their cattle out in their own tough environment, whether it is the hot dry summers, the cold frigid winters or the muddy sloppy calving seasons. We have seen and experienced them all. Therefore, we have developed cattle that withstand most of the elements mother nature hands out. We breed them to be as problem and maintenance free as can be. We know that the average cowman doesn't have the time to put up with hard calving heavy birth weighted calves that lay around. Vigor is a high priority because neither you or I have the time to put up with extra calving chores. These bulls will compliment your breeding program, they blend together some of the top Simmental and Angus genetics.

Every bull has to pass his own individual screening test for vigor, disposition, weaning performance before he ever has the opportunity to make the sale. After he is sold we will feed him until April 1st. At that time we will give him a breeding soundness exam and deliver him only if he still makes the grade.

We value you as our customer and believe it is an honor to serve as your seedstock supplier. These bulls come fully guaranteed.

### 150 Simmental and Angus Bulls Sell

- 60 Black Simmental bulls
- 50 Halfblood SimAngus Optimizer bulls
- 52 Fall Born 18-month-old bulls
- 30 Angus bulls
- 10 Red Non diluted bulls
- 2 Powerful Herd Sires
- 25 Young cows in the prime of their life

- Bulls are 6 to 7 frame
- Bred for calving ease, fast growth, efficiency, maternal strength and carcass quality
- Bulls are developed for ranchers on a high roughage ration with very little starch and plenty of exercise
- Every bull has an efficient hard working dam that does her job in eastern Montana's tough environment
- Every bull is polled and solid colored
- Every bull was born, raised and developed on our ranch. We believe that by keeping them home and out of commercial feedlots and sale barns, we offer a bull that is safe and less likely to be exposed to some unwanted disease.
- Many are homozygous black

Contact us for a catalog, video and web information.

Simmental

Angus

**BEGGER'S**

242 Last Chance Trail  
Wibaux, MT 59353

Bill Begger (406) 795-8148  
Jerry Begger (406) 796-2326  
Bob Begger (406) 796-2380  
Email: [darbegger@yahoo.com](mailto:darbegger@yahoo.com)



# New Concept — Solid Foundation

Featuring progeny from these outstanding sires:



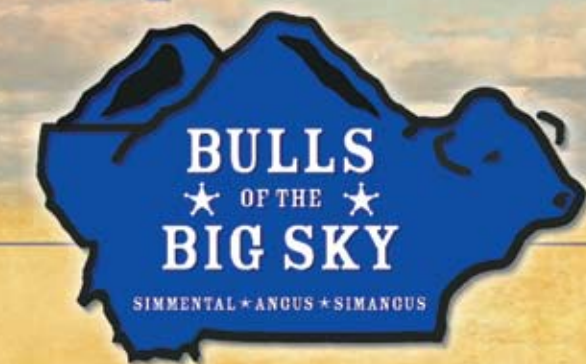
GWS Ebonys Trademark — PB Simmental



Remington Red Label — PB Simmental



3C Macho — PB Simmental



Dream On — PB Simmental



Mytty In Focus — PB Angus

February 22, 2010  
1:00 PM

Billings Livestock Commission  
Billings, MT

200+ Yearling Bulls  
50+ Fall Yearling &  
Two-year-old Bulls

*Ready to work!*

Simmental • SimAngus • Angus  
Black • Red

*Members:*

Gilbert Ranch  
Hayes Ranch –  
Hudson Pines Farm  
Joe Konesky  
Little Bitterroot Ranch  
Livingston Angus Ranch  
Millers Simmental  
Missing Horn Simmentals

Peck Simmentals  
Pugrud Ranch  
RYMO Cattle Co.  
Zimmerman Simmentals

*Group Contact:*

Maureen Mai  
208-267-2668

[www.bullsofthebigsky.com](http://www.bullsofthebigsky.com)



## SYS SIMMENTALS ANNUAL PRIVATE TREATY BULL SALE

February 17, 2010 • At the Ranch

Bids Close at 1:00 pm CST • Call for Details



**922**

Top Gun x Red Reality

BD: 1-20-09 BW: 74 Tw

EPDs: 10 • 0.5 • 37 • 71 • 1 • 3 • 21

15.8 • 5.6 • .07 • .01 • .03 • .12 • 99 • 62



**944**

*She sells in Stanley on 3/13/10*

Top Gun x GSR King Pin

BD: 2-1-09 BW: 80

EPDs: 8 • 1.5 • 44 • 78 • 2 • 3 • 25

15.75 • 10.80 • .05 • -.03 • .02 • .14 • 95 • 64



**970**

Sys All In x Desperado

BD: 2-14-09 BW: 112

EPDs: 5 • 1.9 • 39 • 72 • 1 • 1 • 21

20.6 • 8.1 • .04 • .20 • .05 • .33 • 110 • 65

**Sys Simmentals: Gary & Derek Sys**

9400 205th Ave SW • Douglas, ND 58735 • 701-722-3244 • [sys@srt.com](mailto:sys@srt.com)



# BREEDING FOR THE FUTURE

12th Annual Production Sale

Wednesday, February 10, 2010

Napoleon Livestock, Napoleon, ND • 1:00 pm CST

SELLING: 85 Simmental Bulls, 30 Heifers (10 Purebred & 20 Commercial)



CDI 156W

NF Trump x Hooks Shear Force  
EPDs: 7 2 47 84 4 4 27 -.05 .2 .02 .52  
BW: 98 • WW: 885 • BW Ratio: 100 • WW Ratio: 114  
Heterozygous Black. A standout prospect with tremendous muscle expression, top, and depth.



SIRE: WS Beef Maker R13

Ten high-performance Beef Maker sons sell. 30 Beef Maker calves born at Wilkinson Farms in 2009, averaged a 103 index for birth weight and 101 index for weaning. First daughters calved this year, proving him to be the most complete bull we've ever used.



WS Jackpot W111

HSF High Roller x Hooks Shear Force  
EPDs: 11 -2 37 68 4 9 27 -0.4 -.11 .46 .01 .42  
BW: 73 • Adj WW: 905 • BW Ratio: 117 • WW Ratio: 111  
Homozygous Polled, Non-Diluter Red, out of two black parents who has performed like no other bull we've ever raised. Study this bull's pedigree, performance and EPDs... he has it ALL!



CDI 241W

NF Trump x Hooks Shear Force  
EPDs: 9 3 50 89 4 8 33 21 -.04 .04 .02 .57  
BW: 105 • Adj WW: 891 • BW Ratio: 94 • WW Ratio: 118  
Trump son that is out of top producing Shear Force daughter. A dark red performance bull!



WS Black Limo W112

HSF High Roller x LBR Crockett  
EPDs: 7 0 46 83 1 5 28 12.0 -.08 .49 .00 .43  
BW: 78 • Adj WW: 860 • BW Ratio: 111 • WW Ratio: 106  
Homozygous Polled and Heterozygous Black bull out of Beef Maker's maternal sister. Definite herd sire prospect.



WS Grand Slam W135

NF Trump x R Plus Red Ribeye  
EPDs: 5 4 49 88 3 2 27 21.0 -.03 .09 .01 .47  
BW: 108 • Adj WW: 806  
ET son out of Beef Maker's dam. Smooth-walking bull with tremendous thickness and muscle. Homozygous Polled.



CDI 209W

CDI Distinction x Horizon  
EPDs: \* 0 32 62 \* 8 24 .01 .05 .03 .19  
BW: 84 • Adj WW: 739 • BW Ratio: 112 • WW Ratio: 95  
Homozygous Black. Deep-bodied bull with excellent muscle expression. Comes from a cow family of perfect udders.

## Wilkinson Farms Simmentals

Terry & Cathy Schlenker Family  
7649 49th St. SE  
Montpelier, ND 58472  
Phone: 701-489-3583  
Aaron Cell: 701-269-8271  
Email: eatbeef@daktel.com



Visitors welcome!

We request no Friday night or Saturday calls, please.

## C Diamond Simmentals

Neil Nicholson Family  
4720 34th Ave SE  
Dawson, ND 58428  
Home: 701-327-4438  
Chris Cell: 701-391-6904  
Email: cdiamond@bektel.com  
www.cdiamondranch.com



CDI 45W

HSF High Roller x Shear Force



CDI 102W

ES Reloaded x Preferred Beef

*A Genetic Opportunity! We will be bringing the best to town!*

Our top 5 sire groups, their top five '09 daughters. Two choice heifers from each group will sell!

Contact us for more info and watch [www.cdiamondranch.com](http://www.cdiamondranch.com) for updates!



# From Head to Tail ... Maternal to Rail ...

# Klain Simmental Has You Covered!



### KSR Velocity 212W Purebred ET

March 3 • 92 lbs • 665 lbs • Dream On x Electra • Pld  
 CE BW WW YW MCE MM MW CW YG MB  
 8.8 -4 40 61 8 -1 19 -3 .05 .31

Super, correct ET son of Dalcyce's Electra cow and Dream On.



### KSR Total Package 219W Halfblood

Feb. 27 • 97 lbs • 703 lbs • Dream On x Lucky Break • Pld  
 CE BW WW YW MCE MM MW CW YG MB  
 11 0 28 51 8 2 16 -7 .08 .32

Full brother to '08 Ag-Expo Reserve Champion Bull and the lead bull in the '08 Grand Champion Pen of 3. His full brother was high-selling bull in '08 sale.



### KSR Icon 253W Purebred

March 3 • 92 lbs • 759 lbs • Fortune 500 x I'll Be Blk • Pld  
 CE BW WW YW MCE MM MW CW YG MB  
 7 1.4 42 72 2 2 22 7 .09 .23

Icon will add length and pounds to your herd.



### KSR Encore 287W Purebred

March 8 • 88 lbs • 741 lbs • Commandero x Firestone • Pld  
 CE BW WW YW MCE MM MW CW YG MB  
 8 .5 40 61 4 1 21 -1 .11 .22

Encore is a long and correct full brother to Trey's heifer that won 5th Overall at the North Central Regional Classic this past summer.



### KSR Pure Power 427W Purebred

Feb. 28 • 92 lbs • 753 lbs • Pure Power x Sarge • Pld  
 CE BW WW YW MCE MM MW CW YG MB  
 7 2 46 68 0 -3 17 4 .09 .37

A deep, thick-topped bull with excellent EPDs.



### KSR Beef Maker 802W Purebred

Feb. 14 • 91 lbs • 769 lbs • Hummer x Dream On • Pld  
 CE BW WW YW MCE MM MW CW YG MB  
 10 -0.1 39 58 10 -1 19 -4 .04 .26

A super long bull with good EPDs. He's out of a first-calf heifer.

28<sup>th</sup> Annual Production Sale  
**Saturday,**  
**Feb. 6, 2010**

1:00 pm • Turtle Lake, ND  
 Turtle Lake Weigh Station  
 Lunch Served at 11:00 am

38 Years Performance Testing • 14 Years Ultrasound Testing

Selling: 28 Polled Yearling Simmental Bulls (19 black, 9 red)  
 10 Polled Registered Open Heifers • 10 Polled Black Commercial Open Heifers  
 Bred Cows for Sale on the Ranch

Uniformity from Us Creates Uniformity for You!  
**KLAIN SIMMENTAL RANCH**  
 Durnell, Darcy, Tyler, Dalcyce and Trey Klain  
 (701) 448-2408 • 1364 20th St NW • Ruso, ND 58778





# North Dakota Simmental Association Annual Banquet

## 2009 Pioneer Award Winner

### Bob Grant

Bob Grant has been a fixture at North Dakota Simmental functions for many years. Bob joined the ASA on October 12, 1976 and holds membership number 9157. Bob is a former director for the NDSA and currently serves as its Secretary/Treasurer, a position he has held for 16 years. He has also served as the Secretary of the NW Select Simmental Group for 20 years and has been a member of that group for 25 years. Bob is also very active in his community, serving on his local elevator board and school board.



He has been a director of the Mountrail Williams REC for 28 years and as the President for the state REC board. Bob and Helen Grant, along with their children, Rob, Garry, Becky and Adam, operate a grain farm and cattle operation under the name Grant Simmentals. Congratulations to Bob Grant, the 2009 North Dakota Simmental Association's Pioneer Award Winner.

Bob Grant, the 2009 Pioneer Award Winner

## 2009 Promoter of the Year Award

### Gary Sys

The 2009 Promoter of the Year recipient attends numerous events in the state and always has a smile on his face while doing it. He may have several young kids all trying to drag around heifers and water buckets, some may be crying, but he still wears a smile and enjoys himself. He is a great example to all the people in the cattle industry. Not only is he promoting the breed at the events, he is also promoting the breed to the younger generation by exposing them to the cattle industry.

Gary Sys, from Sys Simmentals in Douglas, ND is one of the most easy-going guys around. He and his wife, Nan, have five children of their own and have also taken in several foster kids in the past. They are so incredibly patient and caring.

Gary started in the cattle business after high school. He started to AI to Simmental bulls in the early 1990's, which is also when he purchased 10 registered heifers from Jim Hystad. In the past, Sys Simmentals has marketed their bulls and females at the NW Select Sale in Stanley and at the ND Simmental Classic. This year will be the second year of their own production sale in February.

Sys Simmentals attends the North Star Classic in Valley City, the Ag Expo in Minot, and the Drake and Towner Bull Days each year. Gary has also completed two full terms on the ND Simmental Board.

Gary Sys and his family are great examples for the young people in the cattle industry. Please join me in congratulating Gary Sys and his family for their contribution to the Simmental breed.



President Pat Thorson congratulates Gary Sys as Promoter of the Year

## 2009 Commercial Producer of the Year

### Delmer Leapaldt

The Commercial Producer of the Year Award should actually be called the Lifetime Achievement Award, because that is what it takes to build a successful cattle program. The successful programs are always trying to improve, which is what the ND Board considered in choosing the Commercial Producer for 2009.

Perseverance is something our Commercial Producer for 2009 possesses; we could maybe go so far to say stubborn! But it has paid off for him through the years. He started his cowherd when he was 16 years old, in 1950, with a shorthorn heifer his dad purchased for him at a sale. She proceeded to prolapse and after getting fixed up, she stepped on her calf. Both cow and calf survived but it was a discouraging start!

He continued and had primarily straight Herefords for his early years, as well as some Holsteins for milking, which prompted him to go to AI school. After a few years, the Curtis Breeding representative asked him if he would consider using Simmental on those Hereford cows. At that time only two bulls were available – Sultan and Parisien. All the neighbors at that time thought he was nuts! But he used the Simmental bulls and kept all the high-dollar halfbloods, to build his herd.

In 1982, he purchased his first Simmental bull – a Polled Signal son from Deckert Simmentals. He sold many bulls privately off the farm for a few years, until he realized he did not like the extra work and management. At that point - 1993, he went to Andy Wald's sale and purchased two Hercules sons –WSR The Blonde Bomber and WSR Copper Tone. Again, the neighbor thought he was nuts, because of what he paid for the bull. The Blonde Bomber ended up being one of the most influential bulls ever used in his program.

The biggest challenge was fighting through the low prices in the 1970's and 1980's. In 1984, he sold calves off the cow at 635 pounds for \$66.00 and 484 pounds for \$62.00. But he persevered through those times and has been currently selling calves by semi-loads directly to feedlots, with tail-enders going to auction barns. The feedlots always like to get his calves each year, so it is not a problem to get a contract for him. He has been backgrounding calves for 20 years, which allows him to gain more benefit out of the quality of cattle. A big percentage of heifers are bred for replacements or for sale as bred heifers. Most of the virgin heifers are bred Red Angus each year, to utilize crossbreeding as well as the calving ease.



President Pat Thorson congratulates the Delmer Leapaldt as Commercial Producer of the Year



# Hoiby Simmental **B**ilnanza

**Thursday,  
Feb. 18, 2010**

**1:00 pm CT**

**Rugby Livestock  
Rugby, ND**

*Selling:*

*45 Red & Black  
Simmental Bulls*

*10 Registered Simmental  
Open Heifers*



**W21**

**Trademark x Nophalt**

CE: 7, BW: 2, WW: 29, YW: 50, MCE: 5, M: 4, MWW: 18



**W58**

**Star Power x Big Sky**

BW: 1, WW: 41, YW: 68, M: 3, MWW: 23



**W36**

**Trademark x Red Reality**

CE: 8, BW: 0, WW: 32, YW: 51, MCE: 3, M: -4, MWW: 12



**W68**

**Net Worth x Perfector**

BW: 0, WW: 34, YW: 71, M: 5, MWW: 22



**W52**

**Power Line x Hummer**

CE: 6, BW: 4, WW: 43, YW: 81, MCE: 3, M: 6, MWW: 28



**W55**

**Trademark x Big Country**

CE: 6, BW: 1, WW: 38, YW: 63, MCE: 5, M: 6, MWW: 25  
Grand Champion Simmental Bull - West River Livestock Show



**W22**

**Star Power x Hot Stuff**

BW: 2, WW: 37, YW: 61, M: 2, MWW: 16  
Grand Champion Simm-Influenced Bull - West River Livestock Show

**SIMMENTAL SIRES:**  
TRADEMARK • RED ROCK  
STAR POWER • POWER LINE

**ANGUS SIRES:**  
NET WORTH

**HOIBY SIMMENTAL RANCH**

Lyndon, Shelley,  
Paige & Levi Hoiby  
7890 101st Ave. NW  
McGregor, ND 58755  
701/546-4043



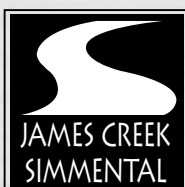
# James Creek

Your Northern Source For Fleckvieh Genetics

**7th Private Treaty sale begins February 2, 2010, 1pm at the Farm!**

## SALE FEATURES

**Performance and carcass data will be available after January 25. Check out all of the bulls on our website. For more information on the bulls call or stop by.**



**Heathe, Holly & Hanna Widicker**

4664 Main St. • Heaton, ND 58418  
701-984-COWS (2697) • [jscow@daktel.com](mailto:jscow@daktel.com)  
[www.jamescreeksimmental.com](http://www.jamescreeksimmental.com)



**W413 - Full Fleckvieh**

Embryo from our most consistent donor P410 and Sunny Valley Sargent. These Sargent calves are super good. Sargent is a polled Full Fleckvieh who is syndicated and there is limited semen to the public.

**Act. WW: 790**  
**EPDs: 2, 4, 35, 56, -2, 17, 35**

- All bulls sired by Full Fleckvieh bulls
- Excellent bulls by: Sunny Valley Sargent, IPU Bronson, and Brink Security



**W412 - Full Fleckvieh**

This is an embryo from Bronson and our Romulus donor, N37. Two years ago we had a bull from this mating that sold to Duane Carlson. We loved that mating and flushed N37 back to Bronson. You don't need to look long to see why we went back to the well.

**Act. WW: 923**  
**EPDs: -4, 4, 40, 66, -4, 14, 35**

# LAZY H THREE SIMMENTALS A/H CATTLE COMPANY

Please contact or visit [www.hansen-ranch.com](http://www.hansen-ranch.com) for more info and Feb. sale date.



A/H

Andrew & Jenni Hansen  
(605) 448-8391  
(605) 738-2568  
Lyle & Jane Hansen  
(605) 448-5846  
10364 431<sup>st</sup> Avenue  
Britton, SD 57430  
[lazyh3@msn.com](mailto:lazyh3@msn.com)

H  
3

- Selling: 20 bulls, yearlings & 2 year olds  
35 replacement heifers
- Reference Sires: WS Beef Maker  
Legacy  
Triple C Invasion  
CCR Vision  
Kappes Real Deal  
Scarlet Dreams



# Vision XII

## Simmental & SimAngus Sale

February 14, 2010

1:00 pm • At the Farm

For online catalog, visit:  
[www.rydeenfarms.com](http://www.rydeenfarms.com)

Featuring 120 Exceptional Lots!

**65 Bulls** (Black bulls will be DNA tested for coat color)

**55 Females**



W101 • 205 WT: 818

Sire: Hook's Red Radar • Non-diluted red



W58 • 205 WT: 822

Sire: TNT Top Gun • Non-diluted red



W98 • 205 WT: 811

Sire: Hook's Red Radar • Non-diluted red



W88 • 205 WT: 838

Sire: Trademark



W69 • Homo Black • 3/4-blood

Sire: Rambler



W68 • Calving-Ease Heifer Bull

Sire: Shear Force



W94 • 205 WT: 786

Sire: In Dewtime • Many sons sell!



W102 • Homo Black • Halfblood

Sire: Rambler



U49

Sire: BeefMaker • Bred to: In Focus



# Rydeen Farms

Clearbrook, MN

(218) 776-3338 • (218) 280-1916 • [rydeen@gvtel.com](mailto:rydeen@gvtel.com)

Ruffy Brook Simmentals • (218) 776-3457





*4E Kamakazi W12*

Born: 02/11/09 • Purebred Simmental  
 RC Club King x Blk Shamrock  
 BW: 76 WW: 657

CE: 11 BW: 1 WW: 40 YW: 73 MCE: 4 MM: 5 MWW: 25



*W301*

Born: 03/29/09 • Purebred Simmental  
 STF MR 5207 x 3C Full Figures  
 BW: 94 WW: 840

CE: 11 BW: 0.2 WW: 37 YW: 59 MCE: 4 MM: -0.1 MWW: 18

**SELLING:**

- 45 head yearling Simmental and SimAngus Bulls
- 20 head Black Sim-Influenced Open Heifers by Sorenson Ranch

Wintering and Delivery Available on Bull Offering

EPDs, Performance and Ultrasound Data will be available

**C/K Simmentals**

Kelly Erickson  
 6219 39th St. NW  
 Plaza, ND 58771  
 (701) 497-3749  
 (701) 898-1583  
 simbeef@rtc.coop

**4E Simmentals**

Shane, Jen & Drew Erickson  
 PO Box 147 • Plaza, ND 58771  
 701.497.3558 • 701.898.1216  
 shane\_jen@live.com  
 Robert Erickson (701) 898-0041  
 Kipten Erickson (701) 898-1215

**AI SIRES REPRESENTED:**

- STF Affirmed P44R
- Bush's Domain
- KSU Venom
- SAS Sweet Meat
- LRS Big Country
- SAS Allstar
- RC Club King
- Triple C Positive Power

**EKSTRUM**

Ekstrum Simmentals & Simm/Genetics  
 36220 257th St.  
 Kimball, SD 57355  
 Email: clayekstrum@midstatesd.net

Our 40th Year!  
**SIMMENTALS & SIMM/GENETICS**

**BULL SALE • FEBRUARY 13, 2010 • 1:00 PM**



**CCE EKR MR. TC 117W**

Sire: TNT Top Cut P274  
 Dam: EKR Ms Lightening 117L  
 $\frac{3}{4}$  Simmental  $\frac{1}{4}$  Red Angus • BD: 2/28/09  
 BW: 87 • Act. WW: 775 (No Creep)  
 BW 1.1 WW 37 YW 76 MM 5 MWW 23



**CCE EKR FIRECRACKER 127W**

Sire: TNT Dynamite Black L137  
 Dam: EKR Ms BF Duke 127L  
 $\frac{3}{4}$  Simmental  $\frac{1}{4}$  Red Angus • BD: 2/18/09  
 BW: 93 • Act. WW: 815 (No Creep)  
 BW 2.9 WW 46 YW 82 MM -1.4 MWW 22

**Sires Represented:**

- TNT Top Gun R244, TNT Dynamite Black L137, MRL Black Bear 79S, Ankonian
- Red Caesar, BBS R44, CNS Dream On L186, TNT Top Cut P274, Wheatland Red Teddy 457P, Wheatland Bull 680S, THSF Freedom 330N, TNT Gunner N208, BBS Nophalt P4, Winchester HR P8315, BBS Max S39, Remington Red Label HR

**For more info call today!**

**Clay Ekstrum**

605-778-6185 (H)  
 605-730-1511 (C)

**John Ekstrum**

605-778-6414  
[cattlesalepage.com/ekstrum/](http://cattlesalepage.com/ekstrum/)

*Hieggelke Simmentals*

with guests Elijah Ranch

**ANNUAL PRODUCTION SALE**

**February 17, 2010 • 1:00 pm CST**

Ransom County Fairgrounds • Lisbon, ND

**Selling 50 Powerful Bulls**

- 20 Red SimAngus Bulls
- 15 Red Simmental Bulls • 15 Black Simmental Bulls



*TNT Top Gun*

Several sons of this popular AI sire!

**HIEGGELKE SIMMENTALS**

Jerry Hieggelke  
 701-680-2061

**ELIJAH RANCH**

Julie Barker  
 701-308-0253





# DAKOTA POWER

## SIMGENETICS BULL SALE

**Monday, February 15, 2010 • Valley City, ND**  
**Valley City Winter Show Building • 1:00 PM CST**

*Selling 60 Powerful Yearling SimGenetic Bulls*  
*also selling 20 open heifers from the heart of our replacement pen*



**SRS Right On x Dream On**



**Alliance 187 x Leachman Hairpin**



**Powerline x Arapahoe**



**BC Lookout x Preferred Beef**

**TRIPLE H SIMMENTALS**

*Kelly, Bryan & Jerry Hanson*  
701.789.1391 or 701.789.0655

**BLACK TIE SIMMENTALS**

*Pat & Lori Thorson • Tim & Tam Clark*  
701.371.8230 or 701.799.7752

**PERSON SIMMENTALS**

*Mac Pherson*  
701.680.1476



# Respect.

*At Kenner Simmental we respect our customer's needs and strive to produce genetics that help them to advance with the ever changing demands of the beef industry. By carefully selecting genetics with both phenotype and EPDs, we are able to satisfy the producer and the consumer. This motivates us to always make a better product from pasture to plate.*



**KS Black Diamond W992**  
Wheatland Bull 680S x KS Kayla J497  
EPDs: 7 3 44 77 2 5 27



**KS Steamboat W204**  
MRL Hurricane 27R x 3C Full Figures C288  
EPDs: 8 2 37 62 2 9 28



**BGL Bridger W138B – SimAngus**  
S Chisum x Ellingson Black Perfector  
EPDs: - 2 46 86 - 9 32

Join us at our 14th Annual Production Sale • February 13, 2010, 1:00 PM • Bismarck, ND

Call for more information

**KENNER**  
SIMMENTALS



**Roger, Jeanette, Erika & Brett Kenner**  
5606 57th St NE • Leeds, North Dakota 58346  
Phone 701-466-2800 • Erika 406-581-1188  
rakenner@gmail.com

Herdsmen: Bryan Leapaldt  
701-466-2553 • 701-739-8764 Cell  
[www.kennersimmental.com](http://www.kennersimmental.com)